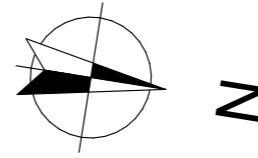


LES BORÉALES

DE SAINT-PRYVÉ



Valloire Habitat

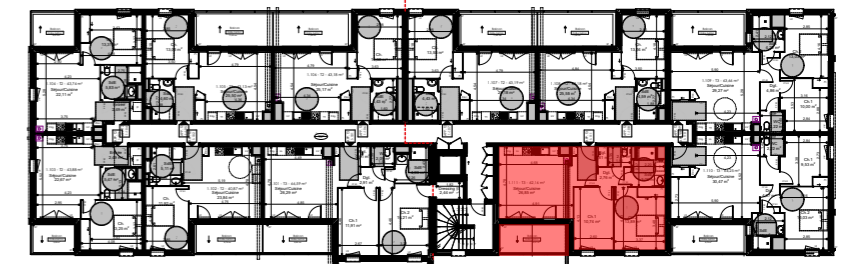
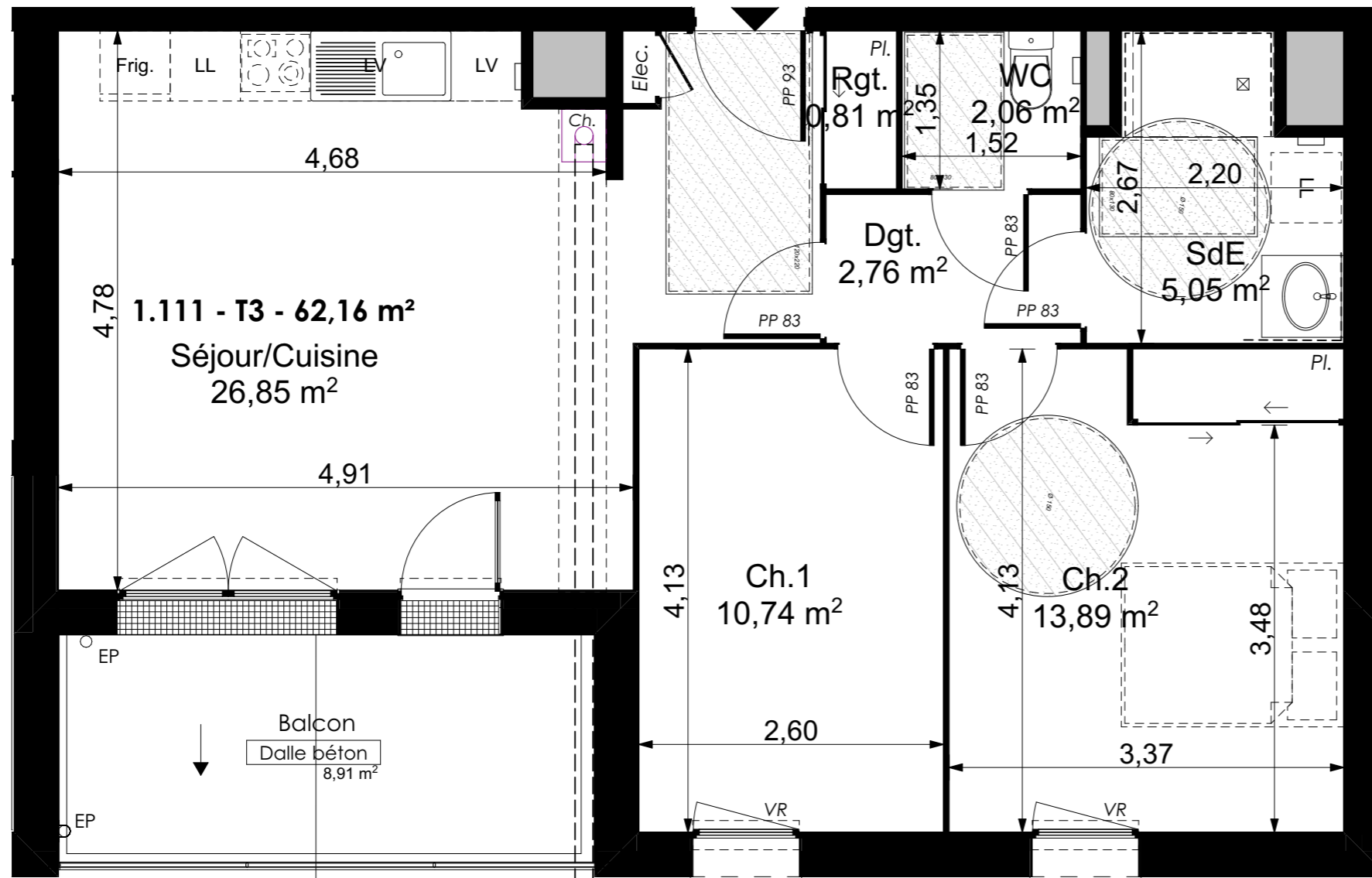
Groupe ActionLogement

28 bis rue du Gros Raisin
45750 SAINT-PRYVE-SAINT-MESMIN

Les BoRéales de Saint-Pryvé

TYPE T3 - LOGEMENT 1-111
R+1

Séjour/Cuisine	26,85 m ²
DGT	2,76 m ²
Rgt	0,81 m ²
WC	2,06 m ²
SdB	5,05 m ²
Ch. 1	10,74 m ²
Ch. 2	13,89 m ²
Total surfaces habitables 62,16 m ²	
Annexes	Surf. Utile
Balcon	8,91 m²
Total surfaces Annexes	8,91 m ²
TOTAL SURFACES 71,07 m²	



15/11/2022

Indice C

Ech : 1:50

0.00 0.50 1.00 2.00 3.00

